

ProtoCOL 3

Multiwell Batch Set Up - Quick Guide

Start ProtoCOL 3 software

1

Enter



➔ Log on to ProtoCOL 3

2

Position plate

➔ Insert the plate into the ProtoCOL 3 using the plate holder that gives the best contrast between the colonies and background

Capture image

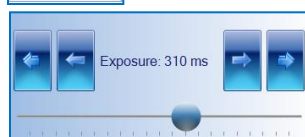
3

Click



➔ Select the image tab and check the live box

Slide



➔ Adjust the exposure by increasing/decreasing the sliding scale

Click



➔ Capture image

Create batch

4

Click



➔ Click New Batch

Plate configuration

5

Select



➔ Select Plate Configuration to set plate size, well diameter and sample volume.

Choose an application

6

Select

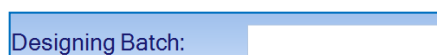


➔ Select Multiwell application

Name the batch

7

Enter

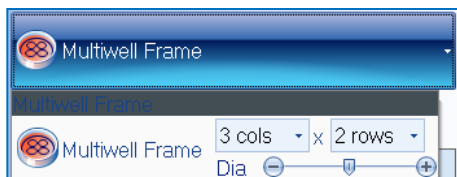


➔ Name the batch

Set frame

Click

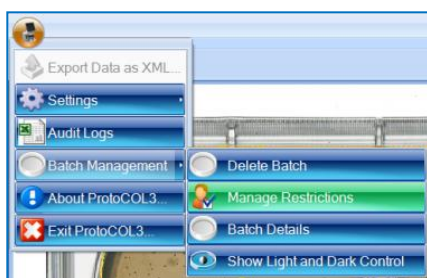
8



→ Select the number of rows and columns and use the slider to set the diameter of the wells

9

Adjust frame and zones



→ Position the measurement zones over the wells

→ Press the ProtoCOL 3 icon to access Batch Management > Manage Restrictions to switch between adjusting the outer measurement frame and individual zones

10

Click



Or

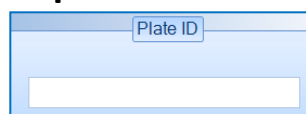


→ Choose Total Plate Count to classify colonies based on light or dark contrast or Colour Classification to classify colonies based on colour

11

Enter a plate ID

Enter



Click



→ Enter a plate ID on the Measure tab . Auto-increment default is "on", to change this click on the Configuration tab

→ Plate names can also be configured using a plate list, barcode or LIMS

12

Accept batch

Click



→ Accept batch

ProtoCOL 3 is now ready to make the first measurement

CONTACT SYNBIOSIS:

EUROPE:
Tel: +44 (0)1223 727125
Email: support@synbiosis.com
www.synbiosis.com

USA:
Tel: 800 686 4451/301 662 2863
Email: support@synbiosis.com
P3MWBSU0818